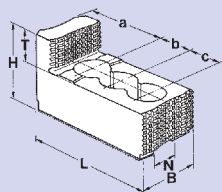


BIG BORE®

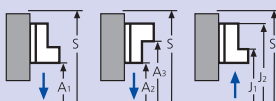
INCH
serration

■ Top jaws
■ T-nuts

GUB Hard reversible top jaws

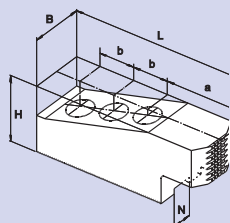


Gripping ranges

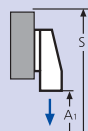


Chuck	BB-N 400-140	BB-N 470-191	BB-N 500-205	BB-N 500-230 BB-N 600-275	BB-N 630-310	BB-N 800-410
Jaw type	GUB 500	GUB 500	GUB 500	GUB 500	GUB 630	GUB 800
Id. No.	12084546	12084546	12084546	12084546	12086446	12088046
B	60	60	60	60	75	75
H	75	75	75	75	85	85
L	140	140	140	140	160	220
T	2x19	2x19	2x19	2x19	30	30
N	25.5	25.5	25.5	25.5	30	30
Serration	3/32" x 90°	3/32" x 90°	3/32" x 90°	3/32" x 90°	3/32" x 90°	3/32" x 90°
a	46	46	46	46	30	51
b	38	38	38	38	50	62
c	38	38	38	38	50	62
kg/set	6.6	6.6	6.6	6.6	13.5	19.5
A1	65-238	100-273	150-358	175-378	275-485	320-590
A2	110-284	145-320	200-405	225-425	275-485	330-600
A3	294-470	330-505	385-590	410-610	475-685	590-865
J1	175-350	210-385	265-470	285-490	395-610	500-770
J2	355-530	390-565	445-650	465-670	595-810	760-1030
S	585	620	705	725	820	1050

GAB Hard top jaws

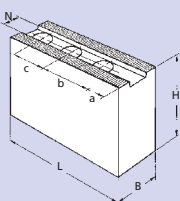


Gripping ranges

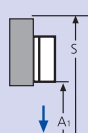


Chuck	BB-N 400-140	BB-N 470-191	BB-N 500-205	BB-N 500-230 BB-N 600-275	BB-N 630-310	BB-N 800-410
Jaw type	GAB 500	GAB 500	GAB 500	GAB 500	GAB 630	GAB 800
Id. No./set	12085146	12085146	12085146	12085146	12086546	12089046
B	55	55	55	55	75	75
H	73	73	73	73	82	82
L	195	195	195	195	245	320
N	25.5	25.5	25.5	25.5	30	30
Serration	3/32" x 90°	3/32" x 90°	3/32" x 90°	3/32" x 90°	3/32" x 90°	3/32" x 90°
a	96	96	96	96	113	165
b	38	38	38	38	50	60
c	38	38	38	38	50	60
kg/set	16.5	16.5	16.5	16.5	31.5	40.5
A1	25-140	60-175	50-260	70-280	105-320	95-365
S	585	620	705	725	820	1010

WBSA-D/WBC-D Soft top jaws



Gripping ranges



Chuck	BB-N 400-140	BB-N 470-191	BB-N 500-205	BB-N 500-230 BB-N 600-275	BB-N 630-310	BB-N 800-410
Jaw type	WBSA-D 500	WBSA-D 500	WBSA-D 500	WBSA-D 500	WBC-D 630	WBC-D 800
Id. No./pc.	12075050	12075050	12075050	12075050	12076440	12078040
B	60	60	60	60	80	80
H	60	60	60	60	80	80
L	170	170	170	170	240	320
N	25.5	25.5	25.5	25.5	30	30
Serration	3/32" x 90°	3/32" x 90°	3/32" x 90°	3/32" x 90°	3/32" x 90°	3/32" x 90°
a	69	69	69	69	110	165
b	38	38	38	38	50	60
c	38	38	38	38	50	60
kg/piece	3.6	3.6	3.6	3.6	11	15
A1	25-195	60-230	105-315	125-325	110-325	95-365
S	545	580	660	680	815	1010

