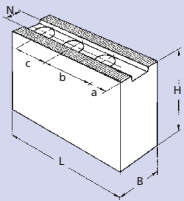


# BIG BORE® ES

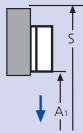
INCH  
serration

- Top jaws
- T-nuts
- Adapters

## WBCL Soft top jaws long version

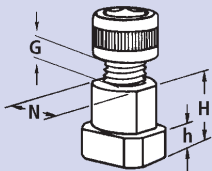


### Gripping ranges



Chuck	BB-N ES 400-140	BB-N ES 470-191	BB-N ES 500-205	BB-N ES 500-230 BB-N ES 600-275	BB-N ES 630-325	BB-N ES 850-375	BB-N ES 1000-560
Jaw type	WBC-D 502	WBC-D 502	WBC-D 502	WBC-D 502	WBC-D 800	WBCL-D 800	WBCL-D 800
Id. No.	12075140	12075140	12075140	12075140	12078040	12079040	12079040
B	60	60	60	60	80	80	80
H	60	60	60	60	80	80	80
L	205	205	205	205	320	390	390
N	25.5	25.5	25.5	25.5	30	30	30
Serration	3/32" x 90°	3/32" x 90°	3/32" x 90°	3/32" x 90°	3/32" x 90°	3/32" x 90°	3/32" x 90°
a	104	104	104	104	165	230	230
b	38	38	38	38	60	60	60
c	38	38	38	38	60	60	60
kg	4.5	4.5	4.5	4.5	15	18	18
A1	-	0-150	60-275	85-275	25-210	25-255	115-405
S	-	595	720	720	895	1070	1220

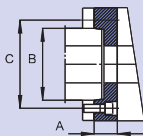
## NST T-nuts



Chuck	BB-N ES 400-140	BB-N ES 470-191	BB-N ES 500-205	BB-N ES 500-230 BB-N ES 600-275	BB-N ES 630-325	BB-N ES 850-375	BB-N ES 1000-560
Jaw type	NST	NST	NST	NST	NST	NST	NST
Id. No.	12065020	12065020	12065020	12065020	13063900	13063900	13063900
N	25.5	25.5	25.5	25.5	30	30	30
H	34	34	34	34	44	44	44
h	15	15	15	15	18	18	18
G	M 20	M 20	M 20	M 20	M 24	M24	M 24
Bolt DIN 912 12.9	M20 x 40	M20 x 40	M20 x 40	M20 x 40	M24 x 60	M24 x 60w	M24 x 60
Tighten torque Md max (Nm)	300	300	300	300	450	450	450

## Adapters for BIG BORE chucks

### ISO-A DIN 55026 mounting adapters



BB-N ES	400-140/470-191			500-205/500-230			600-275			630-325			850-375		1000-560		
	A8	A11	A15	A11	A15	A20	A11	A15	A20	A11	A15	A20	A15	A20	A15	A20	
Spindle nose	A8	A11	A15	A11	A15	A20	A11	A15	A20	A11	A15	A20	A15	A20	A15	A20	
Id. No.	24184020	24114020	24124020	24115030	24125020	24175020	24116020	24126020	24176020	24116320	24126320	24176320	24128020	24178020	on request	on request	
A	mm	40	40	40	40	40	40	40	40	50	50	50	50	50			
B	mm	139.719	196.869	285.775	196.869	285.775	412.775	196.869	285.775	412.775	196.869	285.775	412.775	285.775	412.775	265.775	412.775
C	mm	171.4	235	330.2	235	330.2	463.6	235	330.2	463.6	235	330.2	463.6	330.2	463.6	330.2	463.6

Bayonet and camlock flanges are available on request

