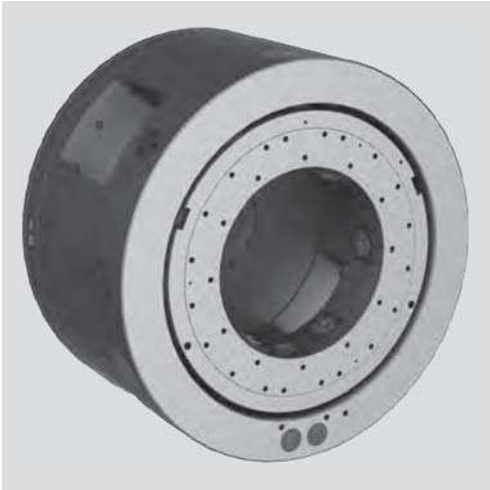


SF-RAZ

2 Position hydraulic ring indexing chuck

- 3 self centering and 3 compensating jaws
- large evacuation windows for easy chip flow
- fully automatic and controlled indexing
- hydraulic actuation



Application/customer benefits

- Machining of couplings in one set up
- Indexing 180° in 2 seconds
- 6 jaw clamping for perfect roundness of the coupling = ideal for premium threads
- Hi-low clamping (roughing-finishing)

Technical features

- Hydraulic, automatic ring indexing chuck
- All functions controlled by proximity switches
- Extremely accurate and rigid indexing mechanism
- For external clamping only
- Automatic central lubrication

Standard equipment

Chuck with mounting bolts

Ordering example

SF-RAZ 950-3+3 A 20

Accessories

Hydraulic manifold including electric manifold, hose kit

Machining of a coupling in 1 set up:

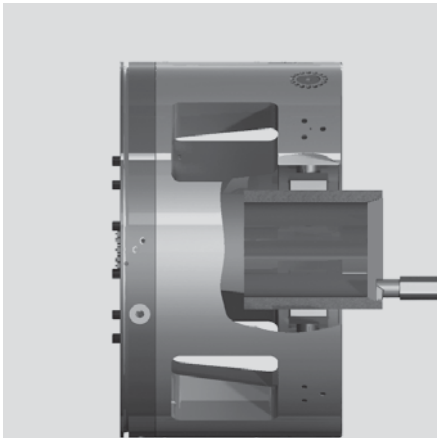


Fig. 1
Clamping the coupling on the outside diameter with 6 jaws (3 self centering and 3 compensating jaws) and machining the thread on side 1.

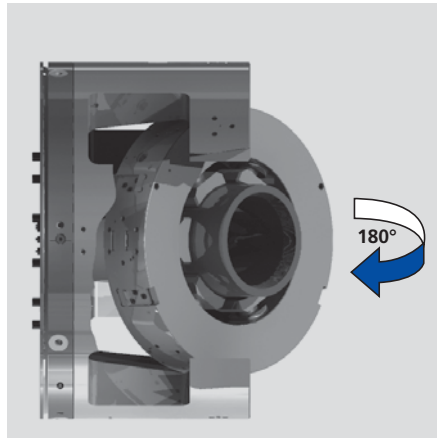


Fig. 2
Indexing the chuck 180° with the coupling remaining clamped.

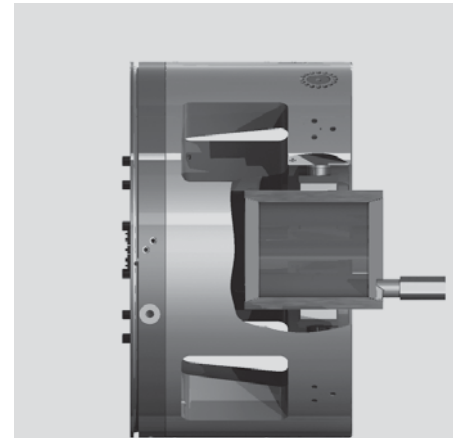


Fig. 3
After indexing 180° machining the thread on side 2.

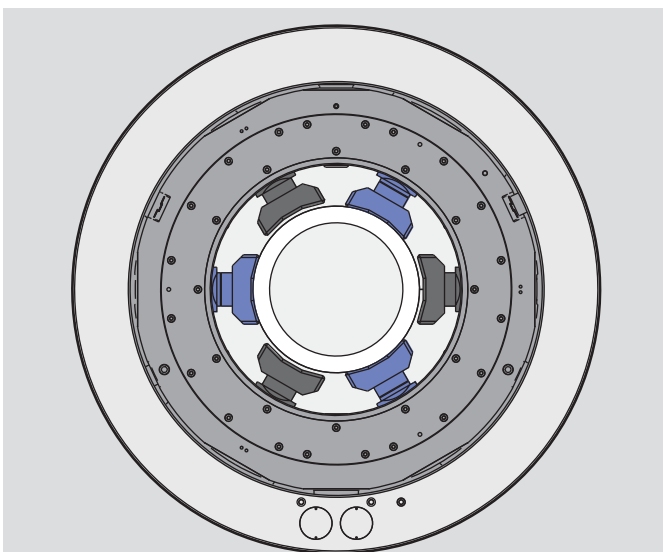


Fig. 4
3 self centering jaws center and clamp the coupling.

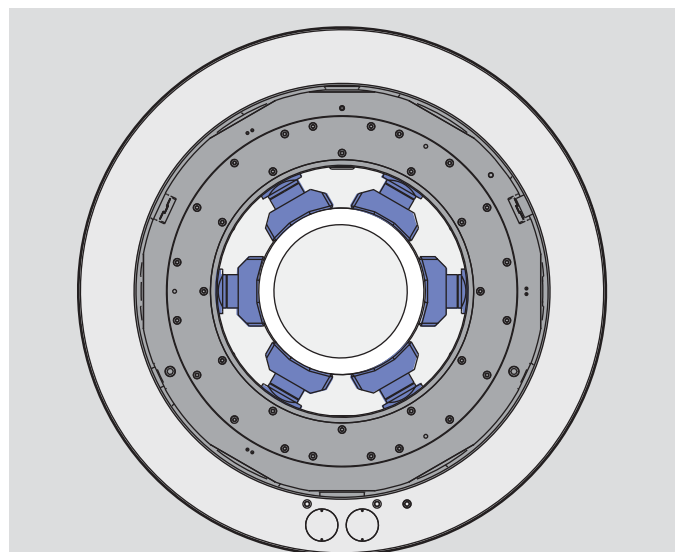


Fig. 5
When the coupling is centered and clamped, 3 compensating jaws clamp the coupling additionally to distribute the total clamping force onto 6 jaws = less deformation of the coupling/perfect roundness of thread.