

PB-D

INCH serration
2 or 3 jaws

PB-C

Tongue & groove
3 jaws

Stationary chuck, pneumatic Ø 130 - 315 mm

- built-in cylinder
- 2 and 3 jaws



Application/customer benefits

- Self centering chuck used on milling machines/machining centers/special machines

PB-D: inch serrated master jaws (1/16" x 90°)

PB-C: tongue & groove master jaws (American standard)

PB-M: metric serrated master jaws (1.5 mm x 60°) **on request**

Technical features

- Stationary chuck consisting of a 2/3 jaw chuck with a built-in pneumatic cylinder
 - Compact design
 - Case hardened body to assure highest precision and long chuck life
- Caution!** Filtered and oiled operating air required

Standard equipment

- Clamping unit
- 1 set of soft blank top jaws (PB-C excluded)
- Grease gun

Ordering example

- 3 jaw chuck fixture PB-C 250
- or
- 2 jaw chuck fixture PBL-D2 165

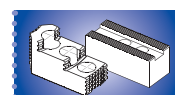
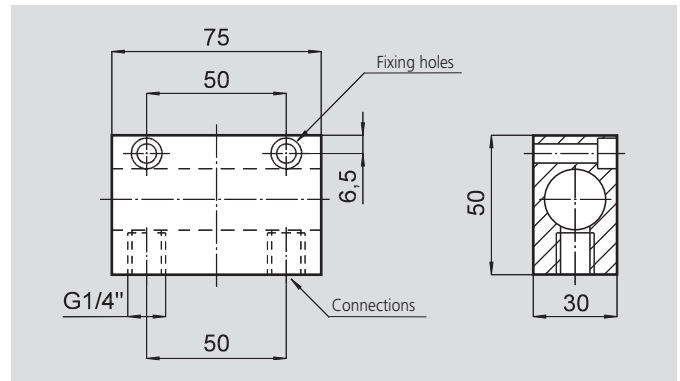
Technical data

SMW-AUTOBLOK Type		PB-D 130 PB-C 130	PB-D 165 PB-C 165	PB-D 210 PB-C 210	PB-D 250 PB-C 250	PB-D 315 PB-C 315
Radial jaw stroke	mm	3.2	3.6	4.4	5	6.3
Radial jaw stroke PBL-D2 (2 jaws)*	mm	6	6.8	8.4	9.7	12
Piston area	cm ²	82	143	236	358	548
Max. operating pressure	bar	7	7	7	7	7
Gripping force at 6 bar	kN	14	24	42	64	98
Gripping force at 6 bar PBL-D2 (2 jaws)*	kN	9	16	26	39	60
Mass (without top jaws)	kg	9	17	28	42	63

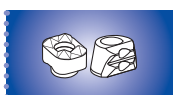
*The 2 jaw fixture is available with serrated master jaws (inch or metric) and long stroke only.

Option for the PB-D and PB-C chuck
Safety unit that maintains a constant pressure inside the cylinder which maintains a steady clamping force even in case of a drop or lack of line pressure

SAB Safety unit with double non-return valve



Page 284



Page 288