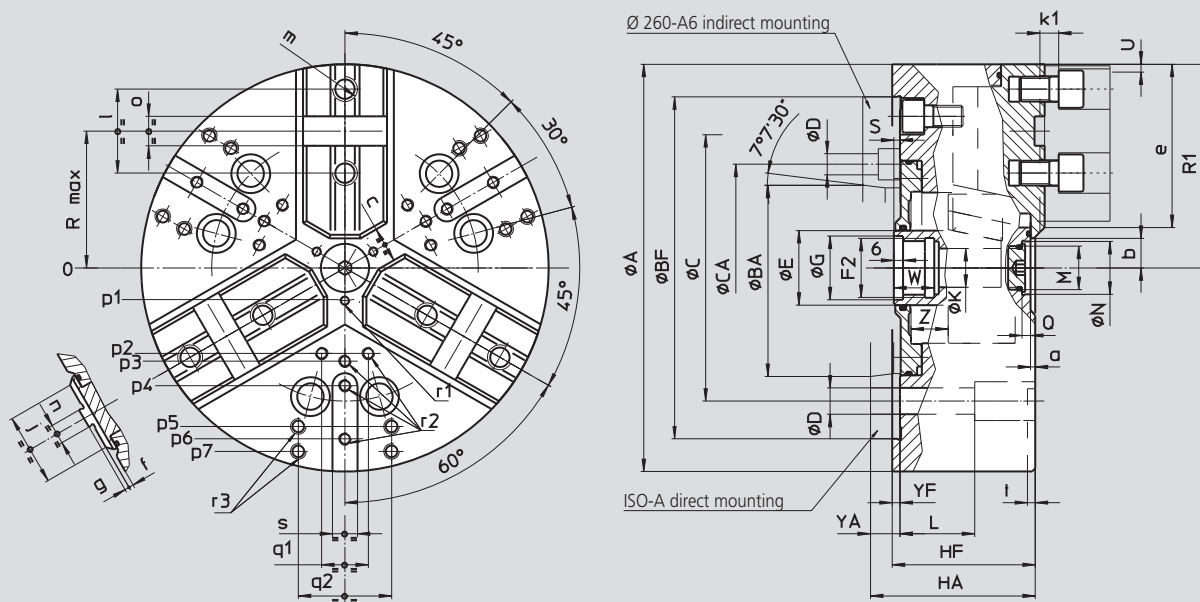


# High precision power chucks Ø 170 - 400 mm

- closed center
- 3 jaws
- proflin® chucks = fully sealed – low maintenance

# AP<sup>®</sup>-C

Tongue & groove



Subject to technical changes  
For more detailed information please ask for customer drawing

SMW-AUTOBLOK Type	AP-C 170		AP-C 215		AP-C 260			AP-C 315		AP-C 400		
	Z140	A5	Z170	A6	Z220	A6	A8	Z220	A8	Z300	A11	
A	mm	172	216		262			315		390		
Bf/BA H6	mm	140	82.563	170	106.375	220	106.375	139.719	220	139.719	300	196.869
C	mm	104.8		133.4		171.4	171.4		171.4		235	
CA	mm	-	-	-	-	-	133.4	-	-	-	-	-
D	mm	11.5		13.5		17	13.5		17		21	
E	mm	32		42		48			48			
F2	mm	M24 x 2		M32 x 1.5		M38 x 1.5			M38 x 1.5		M60 x 1.5	
G H8	mm	25		33		39			39			
Hf/HA	mm	68	78	81	93	92	111	106	101	115	112	127
K	mm	18.5		20		25			25			
L	mm	23		32		38			38			
M	mm	M22 x 1.5		M22 x 1.5		M28 x 1.5			M28 x 1.5		M52 x 1.5	
N H9	mm	24		24		34			34			
Q	mm	5.5		5.5		5.5			5.5			
Chuck open	mm	86.5		108		131			157.5		195	
max.	mm	56		72		88			105			
max./min.	mm	21/4		26/4		28/4			34/4		37/4	
Radial jaw stroke	mm	3.6		4.6		5			6.3		7	
W	mm	22		26		26			26			
max./min.	mm	5	15	5	17	5	24	19	5	19	6	21
Z	mm	17/0		22/0		24/0			30/0		33/0	
a	mm	3		3		3			3			
min.	mm	8.5		12		14			16.5			
min.	mm	9		13		14			16			
e	mm	70		87		107			129		150	
f	mm	3		3		3			3			
g	mm	3		3		3			3			
j	mm	34		46		48			58		63	
k1	mm	10		11		12			12			
l	mm	38		44.4		54			63.5		76.2	
m	mm	M10		M12		M16			M16		M20	
n h8	mm	7.94		7.94		12.70			12.70		12.70	
o H7	mm	12.68		12.68		19.03			19.03		19.03	
p1	mm	16		16		21			21		37.5	
p2	mm	-		-		-			60		80	
p3	mm	38		49		55			62.5		83	
p4	mm	-		80		70			80		110	
p5	mm	65		80		102			102		140	
p6	mm	70		-		102			120		155	
p7	mm	-		-		-			135		170	
q1	mm	-		-		-			30		36	
q2	mm	36		45		60			60		80	
r1	mm	M5/7		M5/8		M6/10			M6/10		M6/12	
r2	mm	M6/14		M8/17		M8/17			M8/17		M10/19	
r3	mm	M8/17		M8/17		M10/19			M10/19		M12/22	
s	mm	16		16		16			16		20	
t	mm	5		5		5			5		5	