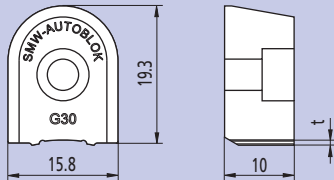
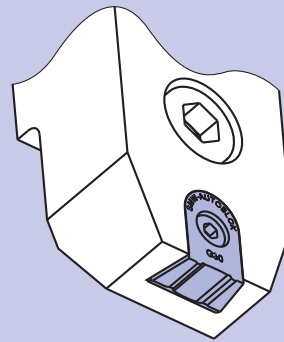
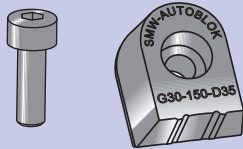


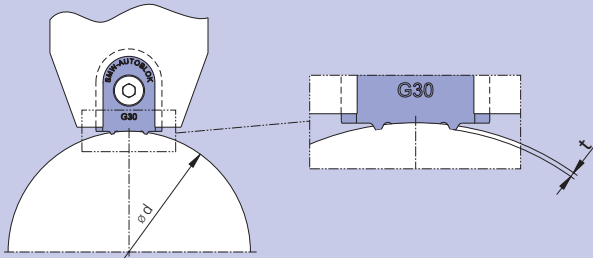
Precision gripper

G30 for highest torque transmission

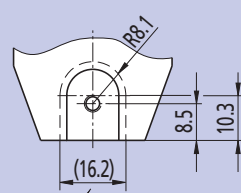
G30 (heavy duty version)
material: HSS



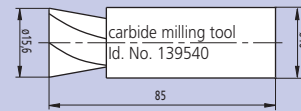
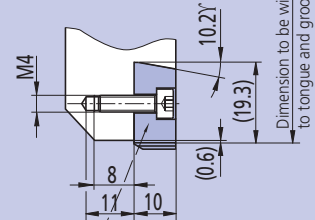
Mounting dimension



Measured into sharp corner



Gripper G30 fitted without clearance



SMW-AUTOBLOK type	G30-200	G30-250	G30-300
Work piece-Ø		24 - 32	
Controlled penetration t	0.20	0.25	0.30
Id. No.	237841	237842	237843
SMW-AUTOBLOK type	G30-200	G30-250	G30-300
Work piece-Ø		33 - 42	
Controlled penetration t	0.20	0.25	0.30
Id. No.	233481	233482	233483
SMW-AUTOBLOK type	G30-200	G30-250	G30-300
Work piece-Ø		43 - 52	
Controlled penetration t	0.20	0.25	0.30
Id. No.	233421	233422	233423
SMW-AUTOBLOK type	G30-200	G30-250	G30-300
Work piece-Ø		53 - 64	
Controlled penetration t	0.20	0.25	0.30
Id. No.	233485	233486	233487
SMW-AUTOBLOK type	G30-200	G30-250	G30-300
Work piece-Ø		65 - 84	
Controlled penetration t	0.20	0.25	0.30
Id. No.	234811	234812	234813
SMW-AUTOBLOK type	G30-200	G30-250	G30-300
Work piece-Ø		85 - 119	
Controlled penetration t	0.20	0.25	0.30
Id. No.	237291	237292	237293
SMW-AUTOBLOK type	G30-200	G30-250	G30-300
Work piece-Ø		120 - 174	
Controlled penetration t	0.20	0.25	0.30
Id. No.	237299	237300	237301
SMW-AUTOBLOK type	G30-200	G30-250	G30-300
Work piece-Ø		175 - 335	
Controlled penetration t	0.20	0.25	0.30
Id. No.	237422	237423	237424