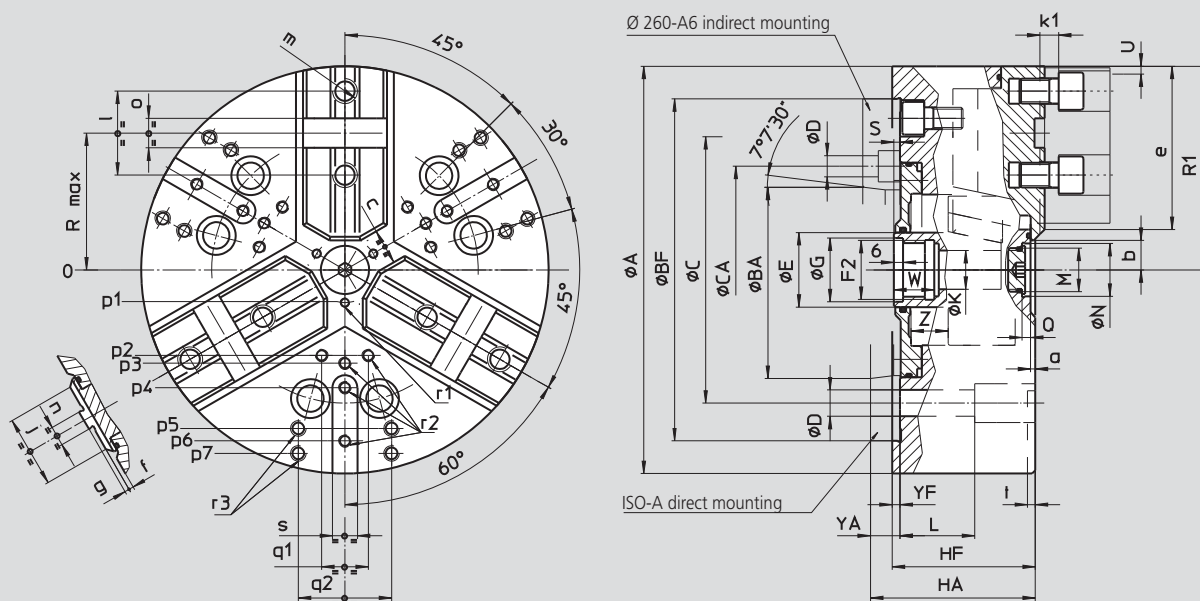


High precision power chucks Ø 215 - 400 mm

- LONG STROKE
- closed center
- 3 jaws
- proflin[®] chucks = fully sealed – low maintenance

APL-C

Tongue & groove



Subject to technical changes
For more detailed information please ask for customer drawing

SMW-AUTOBLOK Type	APL-C 215		APL-C 260			APL-C 315		APL-C 400	
	Z170	A6	Z220	A6	A8	Z220	A8	Z300	A11
A	mm 216		262			315		390	
Bf/BA H6	mm 170	mm 106.375	220	mm 106.375	139.719	220	mm 139.719	300	mm 196.869
C	mm 133.4		171.4	171.4		171.4		235	
CA	mm -		-	mm 133.4	-	-	-	-	-
D	mm 13.5		17	mm 13.5	17	17		21	
E	mm 42		48			48		75	
F2	mm M32 x 1.5		M38 x 1.5			M38 x 1.5		M60 x 1.5	
G H8	mm 33		39			39		61	
Hf/HA	mm 81	mm 93	mm 92	mm 111	mm 106	mm 101	mm 115	mm 112	mm 127
K	mm 20		25			25		48	
L	mm 32		38			38		54	
M	mm M22 x 1.5		M28 x 1.5			M28 x 1.5		M52 x 1.5	
N H9	mm 24		34			34		60	
Q	mm 5.5		5.5			5.5		9	
Chuck open max.	R1	mm 112.5	136			163.5		202	
max./min.	R	mm 76	92.5			111		139	
Radial jaw stroke	S	mm 26/4	28/4			34/4		37/4	
	U	mm 8.5	9.7			12.1		13.3	
	W	mm 26	26			26		38	
max./min.	Yf/YA	mm 5 17	mm 5 24	mm 19	mm 5 19	mm 6 21			
	Z	mm 22/0	24/0			30/0		33/0	
min.	a	mm 3	3			3		3	
min.	b	mm 8.5	9			11		24.5	
	c	mm 6.2	6			6		28	
	e	mm 87	107			129		150	
	f	mm 3	3			3		6	
	g	mm 3	3			3		3	
	j	mm 46	48			58		63	
	k1	mm 11	12			12		14	
	l	mm 44.4	54			63.5		76.2	
	m	mm M12	M16			M16		M20	
	n h8	mm 7.94	12.70			12.70		12.70	
	o H7	mm 12.68	19.03			19.03		19.03	
	p1	mm 16	21			21		37.5	
	p2	mm -	-			60		80	
	p3	mm 49	55			62.5		83	
	p4	mm 80	70			80		110	
	p5	mm 80	102			102		140	
	p6	mm -	102			120		155	
	p7	mm -	-			135		170	
	q1	mm -	-			30		36	
	q2	mm 45	60			60		80	
	r1	mm M5/8	M6/10			M6/10		M6/12	
	r2	mm M8/17	M8/17			M8/17		M10/19	
	r3	mm M8/17	M10/19			M10/19		M12/22	
	s	mm 16	16			16		20	
	t	mm 5	5			5		5	