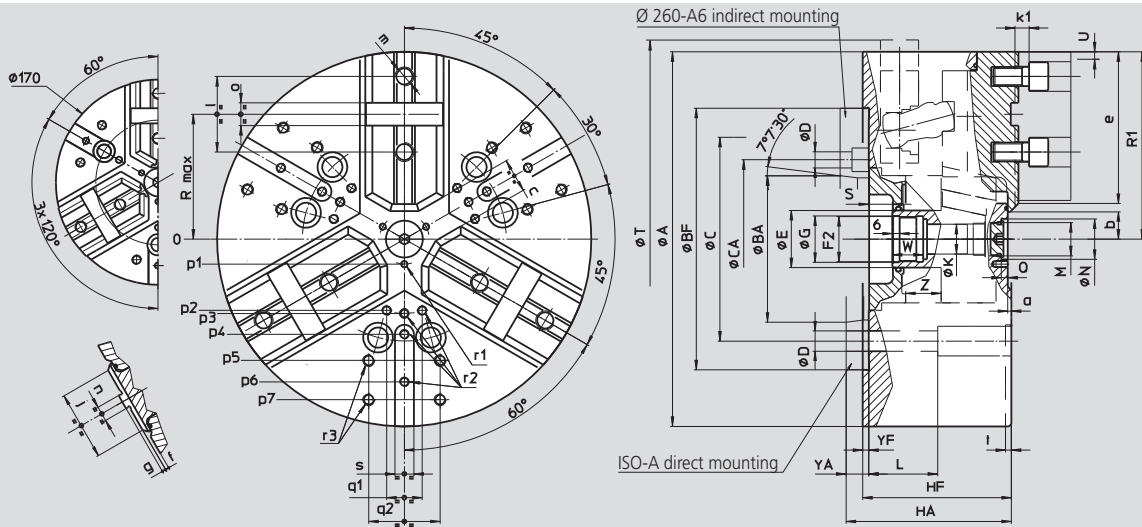


# High precision power chucks Ø 260 - 400 mm

- LONG STROKE
- centrifugal force compensation
- closed center - 3 jaws
- proflin<sup>®</sup> chucks = fully sealed – low maintenance

# NTL-C

Tongue & groove



Subject to technical changes  
For more detailed information please ask for customer drawing

SMW-AUTOBLOK Type			NTL-C 260			NTL-C 315		NTL-C 400	
Mounting			Z220	A6	A8	Z220	A8	Z300	A11
	<b>A</b>	mm		262		315		390	
	<b>Bf/BA</b>	H6 mm	220	106.375	139.719	220	139.719	300	196.869
	<b>C</b>	mm	171.4	-	171.4	171.4	-	235	-
	<b>CA</b>	mm	-	133.4	-	-	-	-	-
	<b>D</b>	mm	17	13.5	17	17	-	21	-
	<b>E</b>	mm		48		48		75	
	<b>F2</b>	mm		M38 x 1.5		M38 x 1.5		M60 x 1.5	
	<b>G</b>	H8 mm		39		39		61	
	<b>Hf/HA</b>	mm	118	137	132	125	139	149	164
	<b>K</b>	mm		25		25		48	
	<b>L</b>	mm		58		58		74	
	<b>M</b>	mm		M28 x 1.5		M28 x 1.5		M52 x 1.5	
	<b>N</b>	H9 mm		34		34		60	
	<b>Q</b>	mm		5.5		5.5		9	
	<b>R</b>	mm		92.5		111		139	
Chuck open	<b>R1</b>	mm		136		163.6		202	
max./min.	<b>S</b>	mm		22/-0.3		20/-7.3		33/3	
Chuck fully closed	<b>T</b>	mm		275		328		412	
Radial jaw stroke	<b>U</b>	mm		9		11		12	
	<b>W</b>	mm		26		26		38	
	<b>Yf/YA</b>	mm	5	24	19	5	19	6	21
max./min.	<b>Z</b>	mm		22.3/0		27.3/0		30/0	
	<b>a</b>	mm		3		3		3	
min.	<b>b</b>	mm		10		12		26	
min.	<b>c</b>	mm		7.4		7.9		30	
	<b>e</b>	mm		110		134		154	
	<b>f</b>	mm		3		3		6	
	<b>g</b>	mm		3		3		3	
	<b>j</b>	mm		48		58		63	
	<b>k1</b>	mm		12		12		14	
	<b>l</b>	mm		54		63.5		76.2	
	<b>m</b>	mm		M16		M16		M20	
	<b>n</b>	mm		12.7		12.7		12.7	
	<b>o</b>	mm		19.03		19.03		19.03	
	<b>p1</b>	mm		21		21		37.5	
	<b>p2</b>	mm		-		60		80	
	<b>p3</b>	mm		55		62.5		83	
	<b>p4</b>	mm		70		80		110	
	<b>p5</b>	mm		102		102		140	
	<b>p6</b>	mm		102		120		155	
	<b>p7</b>	mm		-		135		170	
	<b>q1</b>	mm		-		30		36	
	<b>q2</b>	mm		60		60		80	
	<b>r1</b>	mm		M6/10		M6/10		M6/12	
	<b>r2</b>	mm		M8/17		M8/17		M10/19	
	<b>r3</b>	mm		M10/19		M10/19		M12/22	
	<b>s</b>	mm		16		16		20	
	<b>t</b>	mm		5		5		5	