

# High precision power chucks Ø 500 - 800 mm

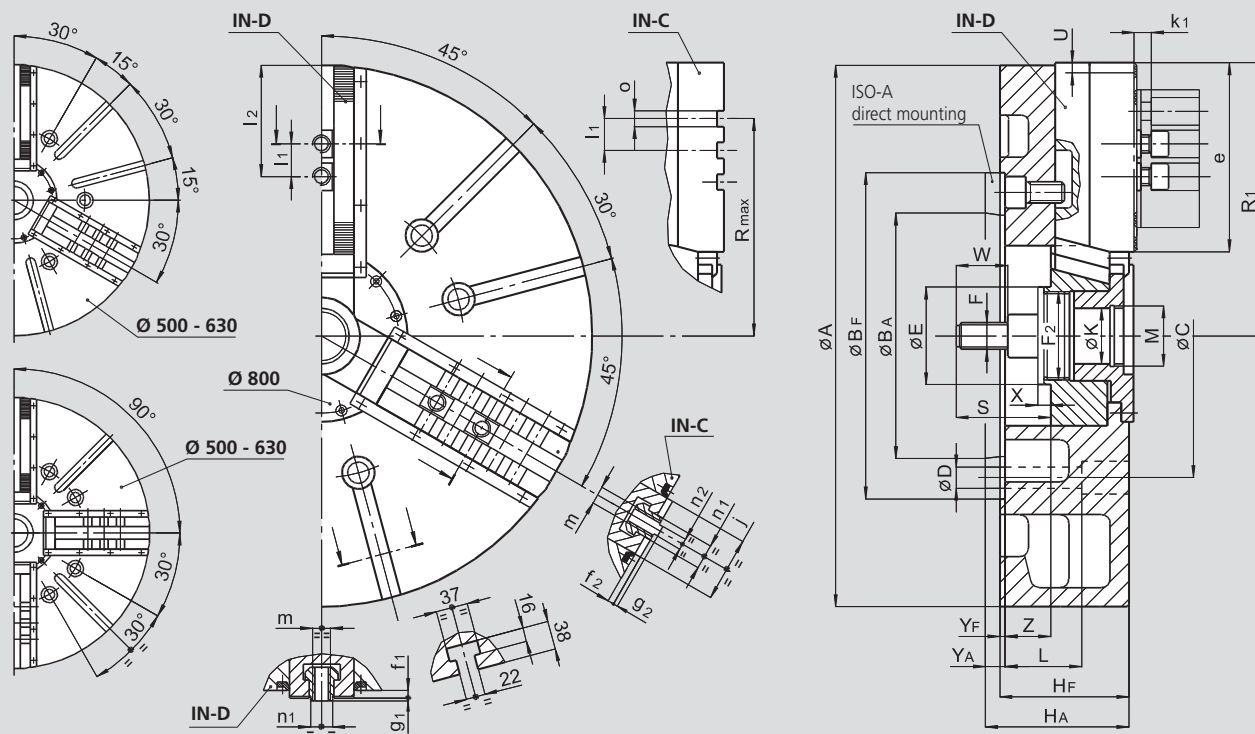
## IN-D

## IN-C

- closed center
- 3 and 4 jaws

INCH serration

Tongue & groove



Subject to technical changes  
For more detailed information please ask for customer drawing

SMW-AUTOBLOK Type		IN-D 500 IN-C 500		IN-D 630 IN-C 630		IN-D 800 IN-C 800		
Mounting		Z380	A15	Z380	A15	Z380	A15	
A	mm	510		630		800		
Bf/BA	H6 mm	380	285.775	380	285.775	380	285.775	
C	mm	330.2		330.2		330.2		
D	mm	25		25		25		
E	mm	114		114		114		
F	mm	M30		M30		M30		
F2	mm	M102 x 2		M102 x 2		M102 x 2		
Hf/HA	mm	130	147	150	167	150	167	
K	mm	65		65		65		
L	mm	89		89		89		
M	mm	M68 x 2		M68 x 2		M68 x 2		
Chuck open	R1	mm	263	318	405	405		
	Rmax	mm	209.5	247.5	349	349		
	S	mm	110	110	110	110		
Stroke per jaw	U	mm	8.5	10	10	10		
	W	mm	60	60	60	60		
	X	mm	15	15	15	15		
	Yf/YA	mm	6	23	6	23	6	23
max./min.	Z	mm	33/1	53/15	53/15	53/15		
	e	mm	165	220	307	307		
	f1	mm	9	9	9	9		
	f2	mm	8	8	8	8		
	g1	mm	4	4	4	4		
	g2	mm	3	3	3	3		
	j	mm	75	75	75	75		
	k1	mm	16	16	16	16		
max./min.	l1	mm	38.1	38.1	38.1	38.1		
	l2	mm	135/48	190/48	277/48	277/48		
	m	mm	M20	M20	M20	M20		
	n1	h8 mm	25.5	25.5	25.5	25.5		
	n2	h8 mm	12.7	12.7	12.7	12.7		
	o	H7 mm	19.03	19.03	19.03	19.03		